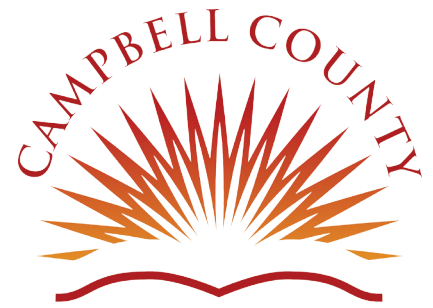


A Year in Review

2014 Annual Report to the Community

Connecting you to big ideas wherever you are!



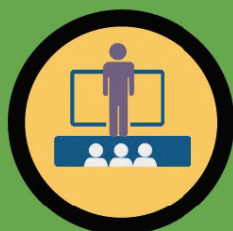
• PUBLIC LIBRARY •



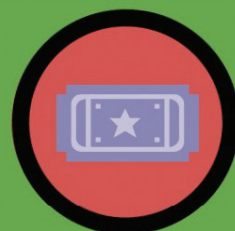
656,211
Visits



1 Million+
Items Checked Out



2,183
Public Room Uses



2,000
Free Events



347,738
Items in Collection

Technology



93 Public Computers



606,981 Website Page Views



142,748 log-ons to wireless &
public computers



Value

Average Cost Per Item
\$25.27

If a family of four each check out 2 items a month, they would receive \$202.16 worth of materials. The yearly cost of purchasing those items would be \$2,425.

Fast Facts



54,084 Cardholders

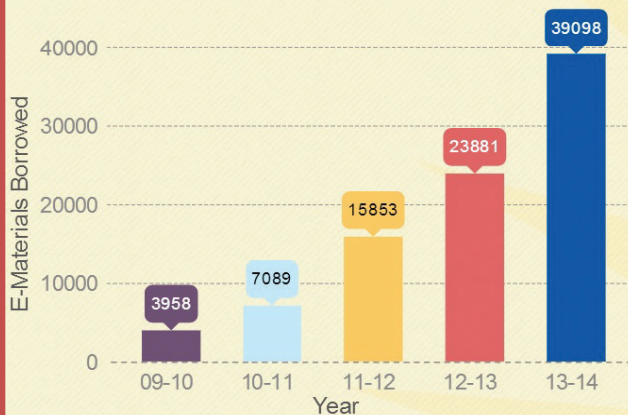


143k Information Requests



20k Calls to Touch
Tone Tales

E-Materials Borrowed



= 3,372 fans & followers

Campbell County Public Library — 2014 Report to the Community

People Facts

90,000 Campbell County residents

54,084 Library cardholders

Cardholders are from:

Newport 22%

Fort Thomas/Southgate 18%

Cold Spring/ Highland

Heights 15%

Alexandria 14%

Bellevue/Dayton 12%

Other 19%

Current Tax Rate

7.7 cents per \$100 on real property

An average homeowner in Campbell County has a \$150,000 property and pays about \$116 in library taxes.

2014 – 2015

Library Board of Trustees

- Cathy Howard, President
- Steven Trumbo, Vice President
- Paul Johnson, Treasurer
- Christie Fillhardt, Secretary
- Michael Whiteman, Trustee

Library touches lives in positive ways

**By JC Morgan
Director**

A strong library is more than numbers — it's a way of life that's woven into the fabric of a community.

[Numbers don't convey the Library's importance](#) to the couple who comes in *every day* to read the newspaper. Or the mom who brings her daughter to read children's magazines since she can't afford to subscribe to the publications her daughter loves. Or the college student who seeks a quieter refuge to study. A special needs student volunteers his time shelving books, getting a sense of purpose and self-worth while reinforcing educational skills he's learned. More than [80 homebound people depend on delivery](#) of library materials *every month*. One hundred and sixty people attended a single job fair. These are real people who know the value of a library.

In June, the American Academy of Pediatrics recommended parents read aloud to infants from birth because an important part of brain development occurs within the first three years of a child's life. For years, CCPL has offered more than [20 programs each week for pre-school age children](#). We work with local day cares, touching the lives of an additional 300 young children *every month*.

We affect people's lives in other

ways, too. [We support dozens of local businesses, organizations and individuals](#) by providing great programs from performers and crafters. We also use the services and products of laborers, office supply stores and booksellers.

The Wall Street Journal, in an Aug. 18 article by Geoffrey A. Fowler, said, "A growing stack of companies would like you to pay a monthly fee to read e-books Don't bother. Go sign up for a public library card instead." Fowler goes on to tout the merits of obtaining e-books from libraries over subscription services. He also said libraries serve an even nobler purpose — providing access to knowledge.

Protecting that access is critically important. [A lawsuit filed in 2012](#) by Charlie Coleman, John P. Roth Jr. and Erik Hermes questions the Library's tax rate. Should the Library be forced to close a branch or drastically reduce services, many people throughout the county will be affected. The Kentucky Court of Appeals is currently reviewing this lawsuit, which threatens the funding process for the Campbell County Public Library, as well as libraries all across the state. The Appeals Court ruled CCPL's tax rate remain at the level set in 2012 through the appeals process.

What libraries offer and the quality of services provided are dependent upon having a supportive funding process. [The Library has proven its value and worth to many people](#). We remain hopeful the courts — and elected officials — will support the laws that we have been following that have been in place for decades.

Board minutes and details about information in this report are available on the Library's website, www.cc-pl.org.

Actual Revenue — FY 2013-2014

Donations	\$28,958
Fees & Services	\$110,273
Grants & State Aid	\$190,370
Miscellaneous	\$4,014
Interest Income	\$4,550
Tax Income	<u>\$4,492,833</u>
Total	\$4,830,998

Actual Expenditures FY 2013-2014

Capital	\$155,093
Collection	\$686,040
Operating	\$1,049,158
Personnel	<u>\$2,597,181</u>
Total	\$4,487,472

Full financial statements are available at www.cc-pl.org.

